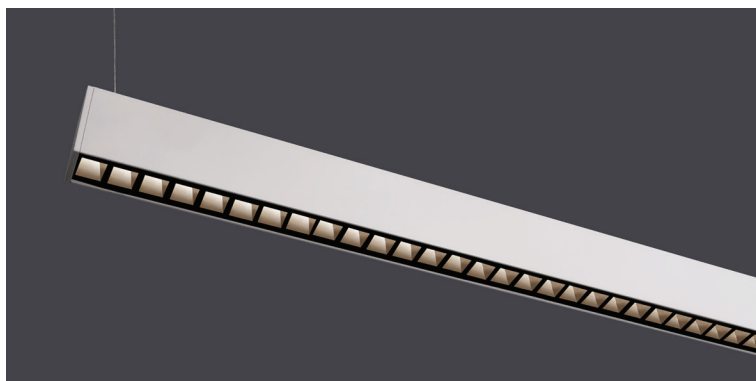


DATE	PROJECT	FIRM	TYPE
------	---------	------	------



Architectural luminaire with direct and indirect lighting using a specially designed reflector optic to shield and control beam spread.

FEATURES

- Optional 'Power Over Wire' System
- Available In Custom Lengths & Long Runs (to the nearest 4" increment)
- Corners & Patterns Available (See Page 2)
- Damp Location Rated
- CRI 90+ Standard
- 2700K, 3000K, 3500K, 4000K & 5000K Color Temperatures Available
- Rated Life - 100,000 hours at L70; 50,000 hours at L90

APPLICATIONS Offices, Reception Areas & Corridors

CONSTRUCTION Extruded Aluminum Housing With Die Cast Aluminum End Caps | **OPTICS** Custom, Injection-Molded Reflector Optic. Available in Wide or Narrow Beam Configurations. Optional White or Black

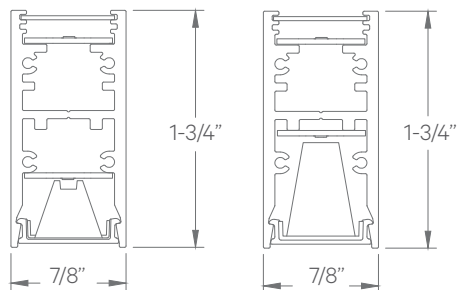
WARRANTY 5 Year Limited Warranty (Covers Standard Components) | **FINISH** Standard Powder-Coated White. Custom RAL Colors Available

FIXTURE RATINGS & CERTIFICATIONS Union Made ETL Listed | Made In The USA Damp Location Rated



ELECTRICAL 0-10V Remote Driver with 10% Dimming. **Optional 'Power Over Wire'** Eliminates Power Feed Cord by Combining the Aircraft Cable and Power Feed. 0-10 1% Dimming Driver also available. 2-Wire Forward Phase; Hi-Lume 1% Dimming, Only Available For 120V

EXTRUSION DIMENSIONS



LED SYSTEM INFORMATION

	Nominal System Watts		Nominal Delivered Lumens	
	DIRECT	INDIRECT	DIRECT	INDIRECT
Standard (LTG1)	5.25 W/ft	5.25 W/ft	475 Lm/ft	600 Lm/ft
Low (LTG2)	3.5 W/ft	3.5 W/ft	350 Lm/ft	400 Lm/ft
High (LTG3)	7.25 W/ft	7.25 W/ft	720 Lm/ft	775 Lm/ft

Based on a 3500K luminaire using one driver. Please consult factory for custom lumen outputs & wattage.

ORDERING



1 - FIXTURE ID KUSH LED SHARP UPDN	2 - LENGTH 2 - 2 ft 4 - 4 ft 8 - 8 ft x'-x" - Custom (specify length)	3 - COLOR TEMP 27 - 2700K/90 CRI 30 - 3000K/90 CRI 35 - 3500K/90 CRI 40 - 4000K/90 CRI 50 - 5000K/90 CRI	4 - LED SYSTEM IN - INDIRECT LTG1 - Standard LTG2 - Low LTG3 - High C - Custom Output (ie-C550Lm/ft)	5 - VOLTAGE UNV - Universal (120/277V)	6 - DRIVER DB - Standard 10% Dimming (0-10V) DB1% - 1% Dimming (0-10V) DB.01% - .01% Dimming (0-10V) LTEA - Lutron 2-wire 1% Dimming L3DA - Lutron 3-wire 1% Dimming LDE1 - Lutron Digital EcoSystem LDE5 - 5 Series EcoSystem; 5% Dimming DMX - DMX Control Systems
----------------------------------------------	------------------------------------------------------------------------------------------	--------------------------------------------------------------------------------------------------------------------------------	----------------------------------------------------------------------------------------------------------------------------	--------------------------------------------------	-----------------------------------------------------------------------------------------------------------------------------------------------------------------------------------------------------------------------------------------------------------------------------------------------------

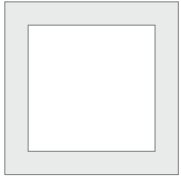
**Patterns available consult factory

7 - FINISH W - White (Standard) BLK - Black CC - Custom Color (provide RAL#)	8 - MOUNTING AC - Aircraft Cable (50") SM - Surface Mount ACP - Power Over Aircraft Cable	9 - OPTICS BNB - Baffle Narrow - Black (32.5° Beam Spread) BWB - Baffle Wide - Black (48° Beam Spread) BNW - Baffle Narrow - White (36° Beam Spread) BWW - Baffle Wide - White (54° Beam Spread)	10 - CIRCUIT (Optional) DC - Dual Circuit EM 120V - Emergency Pack EM 277V - Emergency Pack
----------------------------------------------------------------------------------------------	-----------------------------------------------------------------------------------------------------------	---------------------------------------------------------------------------------------------------------------------------------------------------------------------------------------------------------------------	-------------------------------------------------------------------------------------------------------------

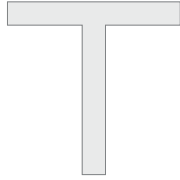
DATE	PROJECT	FIRM	TYPE
------	---------	------	------

CORNERS & PATTERNS

Available with 90° corners; **must consult factory.**



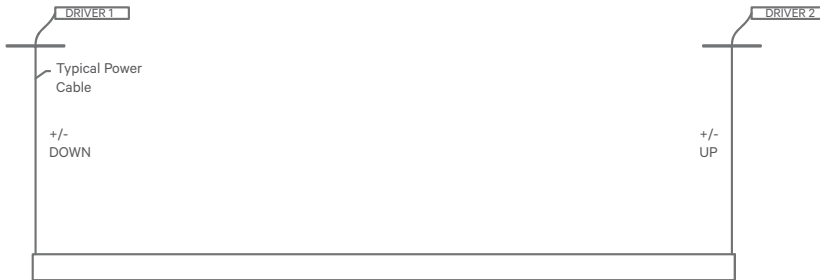
Square Patterns



T Patterns

ACP- 'Power Over Aircraft Cable' Option:

Individual Separate Circuit
(Up to 8ft Only)



Continuous Runs

