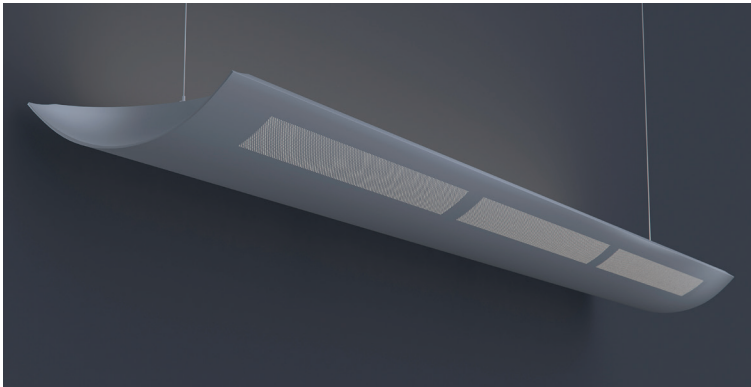





508KL LED



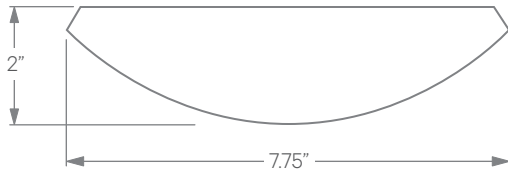
Specification grade, suspended, high performance architectural luminaire. For use in indoor applications where an LED direct/indirect luminaire with maximum uplight as well as downlight is required.

FEATURES

- 8% Direct and 92% Indirect Light Distribution
- Continuous Row Mounting
- Damp Location Rated
- CRI 90+ Standard; R9>50
- 5 Year, 50,000 Hour Fixture Warranty
- 3000K, 3500K, 4000K & 5000 Color Temperatures Available
- Available with PoE

APPLICATIONS	Offices, Lobbies, Retail Stores, Classrooms, Reception Areas & Corridors		
CONSTRUCTION	Durable Cold Rolled 20 Gauge Steel Body with Perforated Metal Slots	OPTICS	N/A
WARRANTY	5 Year Limited Warranty (Covers Standard Components)	FINISH	Standard Powder-Coated White. Custom RAL Colors Available
FIXTURE RATINGS & CERTIFICATIONS	Union Made ETL Listed	Made In The USA Damp Location Rated	 
ELECTRICAL	Integral Driver with 0-10V Dimming Standard. Several Driver Options Available		DRIVERS & SENSORS For Wiring Diagrams and Sensor Information Click Here 

EXTRUSION DIMENSIONS



LED SYSTEM INFORMATION

	Nominal System Watts	Nominal Delivered Lumens	Nominal Efficacy
Standard (LTG1)	15 W/ft	1,508 lm/ft	103 LPW
Low (LTG2)	10 W/ft	1,037 lm/ft	104 LPW
High (LTG3)	20 W/ft	1,733 lm/ft	96 LPW

Based on a 3500K luminaire using one driver. Custom outputs available; specify below.

ORDERING



1 - FIXTURE ID 508KL LED	2 - LENGTH 4 - 4 ft 8 - 8 ft X' - Specify Length for Continuous Row Mounting (Increments of 4 ft)	3 - COLOR TEMP 30 - 3000K/90 CRI 35 - 3500K/90 CRI 40 - 4000K/90 CRI 50 - 5000K/90 CRI TW* - Tunable White RGBW** - RGB+3000K <small>*Must use DMX or TW10 Driver **Must use DMX Driver</small>	4 - LED SYSTEM LTG1 - Standard LTG2 - Low LTG3 - High LTGC - Custom Output	5 - VOLTAGE UNV - Universal (120/277V)	6 - DRIVER DB - Standard Dimming (0-10V) DB1% - 1% Dimming (0-10V) DB.1% - 0.1% Dimming (0-10V) LTEA - Lutron 2-wire 1% Dimming (120V only) LDE1 - Lutron Digital EcoSystem LDE5 - 5 Series EcoSystem; 5% Dimming PoE - Power over Ethernet. Consult Factory for Compatibility DMX - For Color Tuning and RGBW (Remote) TW10 - Dual Channel, 0-10V For Color Tuning (CCT and Intensity Control)
7 - FINISH W - White (Standard) CC* - Custom Color (provide RAL#)	8 - MOUNTING AC - Air Craft Cable (50")	9 - CIRCUIT (Optional) EM 120V - Emergency Pack EM 277V - Emergency Pack	10 - OTHER OPTIONS SE - Spade End Caps BN - Bullnose End Caps		

*White cord and canopy provided. Must specify for other requests.

508KL LED

DIMENSIONS

